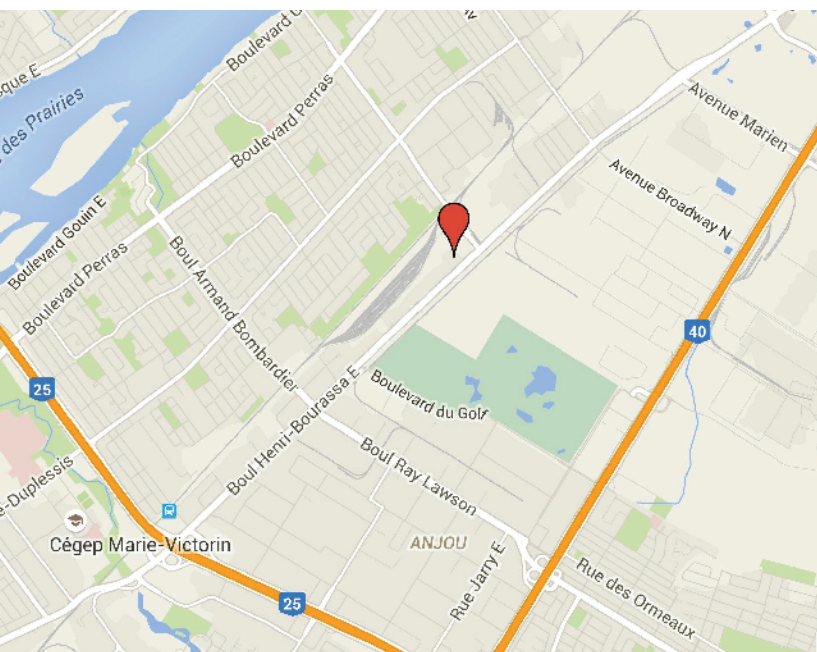


# 9055 BOUL HENRI-BOURASSA E RIVIÈRE-DES-PRAIRIES (QUÉBEC)

## À LOUER FOR RENT



### CARACTÉRISTIQUES

- Superficie totale: 15,690 pi<sup>2</sup>
  - Bureau: 2,088 pi<sup>2</sup>
  - Entrepôt: 13,602 pi<sup>2</sup>
- Hauteur libre: 28' - 30'
- Espace entre les colonnes: 55'-0" x 30'-0"
- Expédition: 2 portes de garage au niveau sol
- Pont roulant Demag 10 tonnes
- Occupation: Immédiate

### HIGHLIGHTS

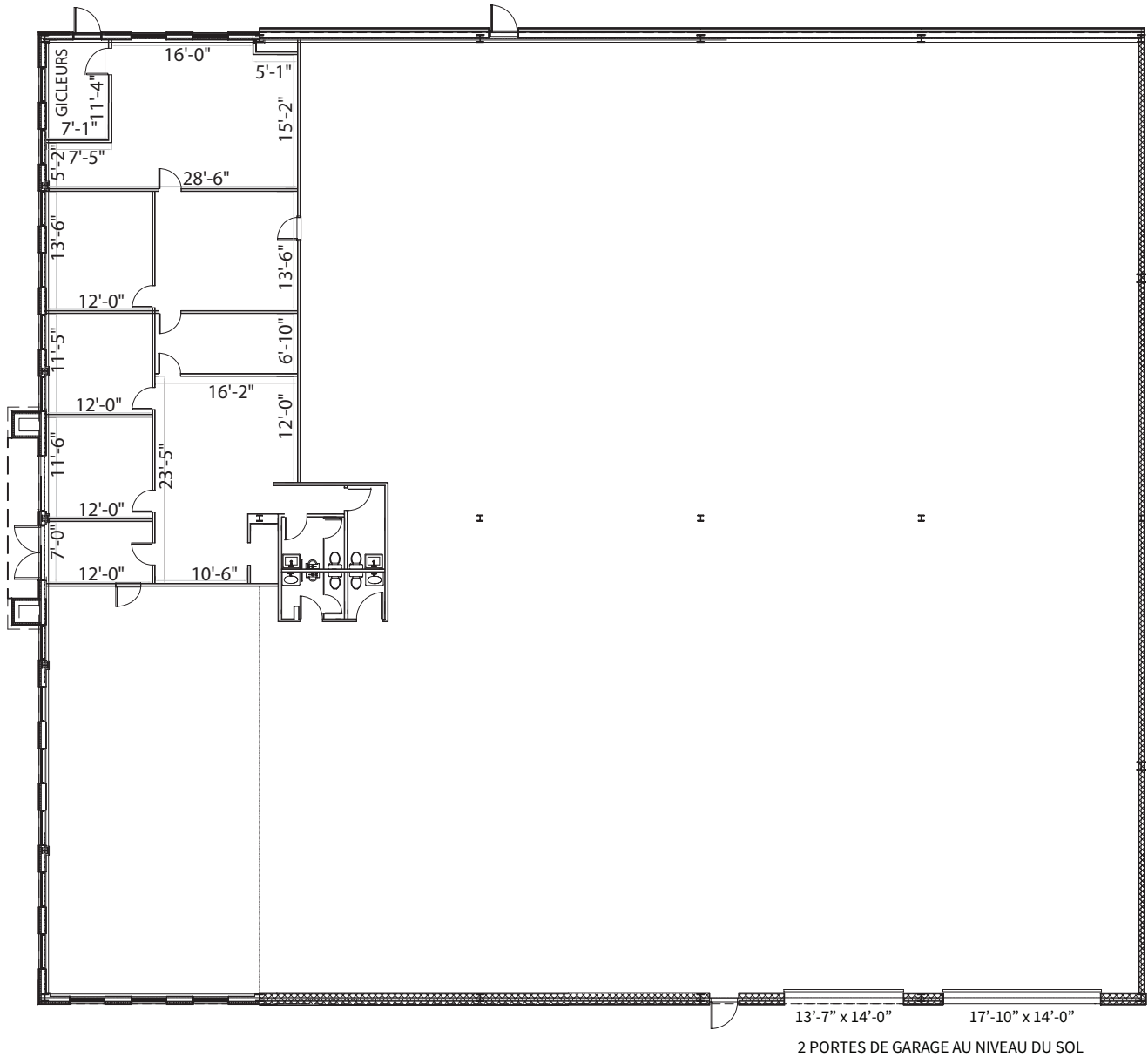
- Total Area: 15,690 sf
  - Office: 2,088 sf
  - Warehouse: 13,602 sf
- Clear ceiling height: 28' - 30'
- Column spans: 50'-0" x 30'-0"
- Shipping: 2 drive-in doors
- 10 Ton Demag crane
- Occupancy: Immediate



Gestion JACAD, Inc.  
514.648.9300  
[www.jacad.com](http://www.jacad.com)

**9055 BOUL HENRI-BOURASSA E  
RIVIÈRE-DES-PRAIRIES (QUÉBEC)**

**15,690 pi<sup>2</sup>/sf**



Gestion JACAD, Inc.  
514.648.9300  
www.jacad.com